

Acute Kidney Injury Increases Risk of ESRD among Elderly

Areef Ishani,* Jay L. Xue,* Jonathan Himmelfarb,[†] Paul W. Eggers,[‡] Paul L. Kimmel,^{‡§} Bruce A. Molitoris,^{||} and Allan J. Collins*

*United States Renal Data System Coordinating Center and Department of Medicine, University of Minnesota Medical School, Minneapolis, Minnesota; [†]Division of Nephrology, Maine Medical Center, Portland, Maine; [‡]National Institute of Diabetes and Digestive and Kidney Diseases, National Institutes of Health, Bethesda, Maryland; [§]Division of Renal Diseases and Hypertension, Department of Medicine, George Washington University Medical Center, Washington, DC; and ^{||}Division of Nephrology, Indiana University School of Medicine, Indianapolis, Indiana

ABSTRACT

Risk for ESRD among elderly patients with acute kidney injury (AKI) has not been studied in a large, representative sample. This study aimed to determine incidence rates and hazard ratios for developing ESRD in elderly individuals, with and without chronic kidney disease (CKD), who had AKI. In the 2000 5% random sample of Medicare beneficiaries, clinical conditions were identified using Medicare claims; ESRD treatment information was obtained from ESRD registration during 2 yr of follow-up. Our cohort of 233,803 patients were hospitalized in 2000, were aged ≥ 67 yr on discharge, did not have previous ESRD or AKI, and were Medicare-entitled for ≥ 2 yr before discharge. In this cohort, 3.1% survived to discharge with a diagnosis of AKI, and 5.3 per 1000 developed ESRD. Among patients who received treatment for ESRD, 25.2% had a previous history of AKI. After adjustment for age, gender, race, diabetes, and hypertension, the hazard ratio for developing ESRD was 41.2 (95% confidence interval [CI] 34.6 to 49.1) for patients with AKI and CKD relative to those without kidney disease, 13.0 (95% CI 10.6 to 16.0) for patients with AKI and without previous CKD, and 8.4 (95% CI 7.4 to 9.6) for patients with CKD and without AKI. In summary, elderly individuals with AKI, particularly those with previously diagnosed CKD, are at significantly increased risk for ESRD, suggesting that episodes of AKI may accelerate progression of renal disease.

J Am Soc Nephrol ●●: –, 2009. doi: 10.1681/ASN.2007080837

Although short-term consequences of acute kidney injury (AKI) have been extensively studied,^{1–4} the rate of development of end-stage renal disease (ESRD) after AKI has been poorly defined in a representative sample. Moreover, the potential linkage between patients with AKI, chronic kidney disease (CKD), and ESRD has been poorly studied and remains ill defined, particularly among elderly individuals, who represent the fastest growing segment of the ESRD population. Since 1972, all patients who have ESRD and are eligible for Social Security in the United States have been entitled to all Medicare benefits, regardless of age. All US renal dialysis units and transplant facilities are required to complete the Centers for Medicare & Medicaid Services (CMS) End-Stage Renal Disease Medi-

cal Evidence Report (CMS-2728) for each patient receiving initial treatment at that site. The Medical Evidence Report registers all patients who have ESRD

Received August 1, 2007. Accepted August 5, 2008.

Published online ahead of print. Publication date available at www.jasn.org.

The interpretation and reporting of these data are the responsibility of the authors and in no way should be seen as an official policy or interpretation of the US government.

Correspondence: Dr. Allan J. Collins, United States Renal Data System, 914 South 8th Street, Suite S-406, Minneapolis, MN 55404. Phone: 612-347-5811; Fax: 612-347-5878; E-mail: acollins@usrds.org

Copyright © ●●●● by the American Society of Nephrology

Table 1. Patient characteristics: Medicare beneficiaries discharged alive from hospitals, 2000

Characteristic	Value
N	233,803
Age (yr; mean)	79.2
Men (%)	38.8
Race (%)	
white	89.0
black	7.7
other	3.3
Baseline condition (%)	
diabetes	27.2
hypertension	64.9
heart disease	69.3
CKD	12.0
AKI (%)	3.1
prior CKD	34.3
ESRD per 1000 patients	5.3
discharged with AKI (%)	25.2
2-yr mortality (%)	29.1

with the US Renal Data System (USRDS), which maintains the data. Thus, patients entitled to ESRD therapy after AKI can be found in the USRDS database.

The primary objective of our study was to determine the postdischarge incidence rates and hazard ratios (HR) for developing ESRD in elderly individuals who sustain AKI. A secondary objective was to assess the difference in developing ESRD between elderly individuals with and without CKD.

RESULTS

The incidence of AKI was 3.1% and baseline CKD was present in 12.0% of the cohort in 2000 (Table 1). Among patients with AKI, the proportion with baseline CKD was 34.3%. Of patients

who survived their index hospitalizations, those with AKI and CKD had higher 2-yr mortality than those with AKI alone (Table 2). This may represent survivor bias; of the patients who had AKI and died during the hospitalization, 64% had AKI alone, and 36% had AKI and CKD (data not shown).

The likelihood of initiating ESRD treatment among patients with AKI increased steadily after discharge (Figure 1). Considering patients with AKI only (Figure 1, top), the likelihood of initiating ESRD treatment after AKI was 0.96% within 30 d, 2.69% within 180 d, 4.08% within 365 d, and 6.96% at the end of 2 yr of follow-up. The corresponding likelihoods for patients without AKI were 0.04, 0.14, 0.25, and 0.49%, respectively. Considering patients with both AKI and CKD (Figure 1, bottom), the likelihood of initiating ESRD treatment after AKI was 1.61% within 30 d, 4.76% within 180 d, 7.91% within 365 d, and 14.29% at the end of 2 yr of follow-up. Corresponding likelihoods were 0.63, 1.68, 2.28, and 3.68% for those with AKI only; 0.26, 0.86, 1.43, and 2.54% for those with CKD only; and 0.01, 0.05, 0.11, and 0.25% for those with neither AKI nor CKD.

Table 3 shows the number of ESRD cases and HR for development of ESRD by patient demographics and clinical conditions. When AKI and CKD were considered independently, patients with AKI were 6.74 times more likely to develop ESRD than those without injury, after adjustment for age, gender, race, diabetes, hypertension, and CKD. When AKI and CKD were considered simultaneously, patients with AKI only (HR 13.00) were approximately 54% more likely to develop ESRD than those with CKD only (HR 8.43). Patients who had CKD and sustained AKI showed a striking multiplicative effect of the interaction between the two conditions on the development of ESRD (HR 41.19), compared with patients with neither diagnosis.

In patients who had CKD and had AKI coded as the principal diagnosis, the rate of developing ESRD was 101.5 per 1000 patients (Figure 2). After adjustment for age, gender, race, di-

Table 2. Incidence of AKI overall and among patients with previous CKD: Medicare patients discharged alive from hospitals, 2000

Characteristic	AKI		AKI and CKD			
	AKI	No AKI	AKI and CKD	AKI Only	CKD Only	No AKI or CKD
n	7197	226,606	2467	4730	25,653	200,953
Age (yr; mean)	80.1	79.2	79.9	80.2	79.3	79.1
Men (%)	47.6	38.5	52.0	45.3	47.1	37.4
Race (%)						
white	83.6	89.2	81.8	84.5	86.7	89.5
black	12.5	7.5	13.9	11.7	9.5	7.3
other	4.0	3.3	4.3	3.8	3.8	3.2
Baseline condition (%)						
diabetes	41.6	26.8	50.3	37.0	37.7	25.4
hypertension	78.0	64.5	84.9	74.3	77.3	62.9
heart disease	84.1	68.9	91.1	80.5	83.0	67.1
Mortality						
rate (%)	57.7	28.2	64.3	54.3	37.9	26.9
HR (95% CI) ^a	2.38 (2.31 to 2.46)	1.00	3.24 (3.08 to 3.40)	2.48 (2.38 to 2.58)	1.45 (1.42 to 1.48)	1.00

^aObtained using Cox proportional models with adjustment for age, gender, race, diabetes, and heart disease (CKD was included in the model for AKI).

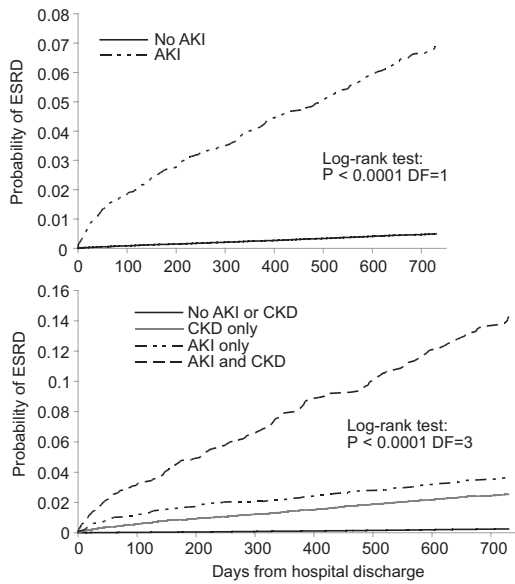


Figure 1. Estimated probability of initiating treatment of ESRD, using the Kaplan-Meier method. (Top) Curves by AKI status. (Bottom) Curves by AKI and CKD status. DF, degrees of freedom.

abetes, and hypertension, these patients were 55.36 times more likely to develop ESRD than those with neither condition. Risk for ESRD in patients with AKI coded as the principal diagnosis and without CKD (HR 15.04) was approximately 42% of the risk of those with both AKI coded as a secondary diagnosis and CKD (HR 36.24).

DISCUSSION

This study demonstrates for the first time the impact of AKI on the hazard for developing ESRD in a representative sample of Medicare beneficiaries. Initiation of ESRD treatment increased steadily after AKI occurred. Patients with both AKI and preexisting or concurrent CKD showed a multiplicative effect on risk for the development of ESRD.

AKI has generally been considered self-limiting, with a good prognosis when recovery is noted in hospital.⁵ Results from our study suggest that among patients who had AKI and did not have recognized preexisting CKD (*n* = 4730), CKD was documented within 2 yr of the AKI occurrence in 72.1%. These findings suggest that CKD may be unrecognized or that AKI can initiate CKD. Several early studies in which renal clearance measures were carefully performed demonstrate that survivors of AKI may experience considerable decline in kidney function.^{6–8} Results from several more recent studies support these findings.^{9,10} A greater likelihood of initiating ESRD treatment among patients who sustain AKI has also been noted in single-center studies in which 8 to 10% of patients with AKI received long-term dialysis (>90 d).^{10–15} Recently, two studies using the Coop-

Table 3. Risk for ESRD in 2 yr after live hospital discharge, Medicare patients hospitalized in 2000

Characteristic	Cases per 1000 Patients	HR (95% CI) ^a
Age (yr)		
67 to 70	8.00	1.00
71 to 75	6.90	0.87 (0.74 to 1.02)
76 to 80	5.65	0.72 (0.61 to 0.85)
81 to 85	4.27	0.63 (0.52 to 0.76)
≥86	1.93	0.36 (0.28 to 0.46)
Gender		
male	6.57	1.24 (1.11 to 1.39)
female	4.50	1.00
Race		
white	4.35	1.00
black	14.23	2.23 (1.93 to 2.56)
other	10.13	1.66 (1.31 to 2.09)
Baseline diabetes		
yes	11.48	2.24 (1.99 to 2.52)
no	2.99	1.00
Baseline hypertension		
yes	7.07	1.91 (1.62 to 2.27)
no	2.04	1.00
Baseline CKD		
yes	25.11	6.82 (6.05 to 7.67)
no	2.60	1.00
AKI		
yes	43.35	6.74 (5.90 to 7.71)
no	4.10	1.00
AKI and CKD		
both AKI and CKD	79.45	41.19 (34.58 to 49.08)
AKI only	24.52	13.00 (10.57 to 15.99)
CKD only	19.88	8.43 (7.39 to 9.61)
no AKI or CKD	2.08	1.00

^aObtained using Cox proportional models with adjustment for age, gender, race, diabetes, and hypertension.

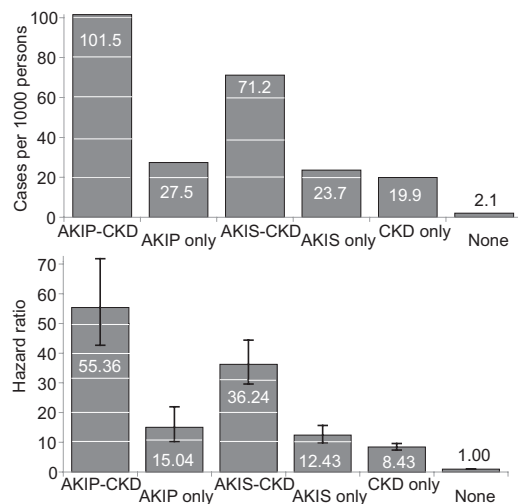


Figure 2. Number of cases per 1000 persons (top) and HR (bottom) for ESRD by AKI and CKD status. AKIP, AKI coded as principal diagnosis; AKIS, AKI coded as secondary diagnosis.

erative Cardiovascular Project suggested that AKI, after a hospitalization for myocardial infarction, was associated with both ESRD¹⁶ and mortality.¹⁷ Specifically, in the study by Newsome *et al.*,¹⁶ any change in serum creatinine after a myocardial infarction was associated with an increased risk for ESRD; however, both studies used the admitting serum creatinine as the baseline, possibly minimizing their observed associations. Furthermore, neither study determined whether baseline CKD modified the observed associations. Other, longer term studies have generally been limited by small sample sizes. Schiffel *et al.*⁹ conducted a 1-yr follow-up of 433 individuals with acute tubular necrosis necessitating renal replacement therapy (RRT). In that cohort, only one (0.2%) individual required RRT. Similarly, Lins *et al.*¹⁸ demonstrated a need for RRT at 1 yr in 13 (9.0%) of 145 survivors of AKI. Finally, in a population-based study, Bagshaw *et al.*¹⁹ demonstrated that 12 (26.1%) of 46 survivors of AKI required RRT at 1 yr.

In our cohort, patients with concomitant AKI and CKD were far more likely to develop ESRD, indicating a strong multiplicative effect of the interaction on ESRD development. That patients with impaired renal function have an increased risk for AKI has also been noted, but the magnitude of the effect has not been previously determined.^{20,21} Epidemiologic data regarding the extent of AKI complicating CKD have been scarce, and the combined effect of AKI and CKD on ESRD development has rarely been studied. In a prospective study of patients receiving dialysis, Metcalfe *et al.*¹³ found that 44% required dialysis as a result of chronic renal failure, 36% as a result of AKI, and 20% as a result of acute and chronic renal failure. Similar proportions were reported from another prospective study: 39% of patients required dialysis as a result of chronic renal failure, 40% as a result of AKI, and 21% as a result of the combination of acute and chronic renal failure.²²

The finding that episodes of AKI place patients at high risk for developing ESRD may help address the ongoing high incidence of ESRD in the United States. Ecological data demonstrate that CKD prevalence is comparable for non-Hispanic white individuals in the United States and in Norway, but ESRD incidence among non-Hispanic white individuals in the United States is 2.5 times that of Norway,²³ suggesting that the prevalence of CKD may not be the sole or key factor in the high incidence of ESRD in the United States. Hsu *et al.*²⁴ reached a similar conclusion. After analyzing ESRD incidence data and nationally representative CKD data, these authors reported that growth of ESRD incidence substantially outpaced growth of CKD in the United States. Only approximately 10% of the growth in ESRD cases could be attributed to the increase in CKD. With individual-level data, Hsu *et al.*²⁵ confirmed their previous finding that increasing prevalence of CKD is not a main factor in the high incidence of ESRD in the United States.

Limitations of this study should be noted. First, the use of

International Classification of Diseases, Ninth Revision, Clinical Modification (ICD-9-CM) codes may confer high specificity but low sensitivity for identifying both AKI and CKD^{26,27}; therefore, these reported data likely are reliable but may underreport the complete impact of both AKI and CKD, especially among women and patients aged >75 yr.²⁶ Whether the diagnostic accuracy of the codes used for AKI varies in the presence of CKD is unknown. In addition, if the specificity of codes is related to severity of disease, then more severe AKI episodes would be more likely to be documented by ICD-9 codes, potentially inflating our observed association between AKI and ESRD. Because our study relies only on diagnosis codes to define events, we are unable to determine whether severity of AKI influences the association. Furthermore, we are unable to adjust for severity of CKD in our analysis. Because more advanced CKD is a strong risk factor for AKI, as shown by Hsu *et al.*,²⁸ the increased incidence of ESRD associated with AKI that we observe may be truly driven by underlying advanced CKD, with a smaller contribution by AKI.

Participants in our study were aged ≥ 67 yr at the beginning of follow-up (and aged at least 65 yr in the baseline period), with physiologically reduced GFR and a high burden of medical comorbidity; therefore, findings from this study may not generalize to younger populations or to the US population as a whole. However, the proportion of incident ESRD patients aged ≥ 65 yr in the US ESRD population increased from 28.6% in 1980 to 42.2% in 1990 and 49.5% in 2000,²⁹ and elderly patients constitute the fastest growing segment of the ESRD population. In addition, although this study emphasizes the relative importance of AKI in the development of ESRD, the overall contribution of CKD to ESRD development should not be overlooked. Our data indicate CKD prevalence was still high in 2000, at approximately 12%. In addition, approximately 57% of patients with incident ESRD included in this study had previous CKD. Finally, a large number of patients with AKI did not survive the index hospitalization and were not included in our cohort, thus minimizing our reported association between AKI and mortality; however, the objective of the study was to assess the long-term effects of AKI on renal outcomes, and inclusion of initial-stay mortality would have obscured these relationships.

In summary, patients with AKI have a much higher risk for developing ESRD relative to those without AKI. CKD is frequently complicated by AKI, and patients with both conditions identified are particularly susceptible to the development of ESRD. The impact of AKI on the development of ESRD suggests that AKI may be an important factor contributing to the high incidence of ESRD in the United States. The findings from this study may be helpful in developing novel strategies to reduce the incidence of ESRD and also suggest that close medical follow-up of kidney function in elderly patients who have experienced AKI is warranted.

CONCISE METHODS

Data and Participants

We constructed a cohort of individuals hospitalized in 2000 with a discharge diagnosis of AKI. For the construction of this data set, we used a 5% random sample of Medicare beneficiary claims data from CMS and the ESRD incidence database from the USRDS. The ESRD incidence data set provided information on patient enrollment in the ESRD program. Patients who recovered kidney function within 180 d of ESRD initiation were classified as non-ESRD. Medicare claims data provided all other clinical and demographic information. Records of individual patients in the two databases were linked by a unique identification number developed by the USRDS.

To be included in the final cohort, patients were required to have the following characteristics:

1. Aged ≥ 67 yr at hospital discharge, with fee-for-service Medicare as primary insurance type at the time of hospitalization and continuously in the previous 2 yr
2. Survived a hospitalization during 2000; patients with AKI were required to survive the hospitalization during which the episode of AKI occurred
3. No history of enrollment in the ESRD program before hospital discharge (including patients who received a diagnosis of ESRD during the same hospitalization as AKI) and no previous diagnosis of AKI in the 2 yr before the current event

Overall, 233,803 patients were included in the study, representing 66.3% of patients in the 5% Medicare inpatient sample from 2000. Because patients were required to survive their hospitalization, we excluded patients who had AKI and died while in hospital.

Definitions

Medicare inpatient claims for all participants were searched for a diagnosis of AKI using ICD-9-CM codes 584.x. Specificity of coding method in AKI was previously validated by Waikar *et al.*²⁶ We further categorized AKI on the basis of coding as the principal or a secondary diagnosis. Patients were followed from the date of hospital discharge until first occurrence of enrollment in the ESRD program, death, or the end of the 2-yr follow-up.

We searched inpatient, outpatient, skilled nursing facility, and physician/supplier Medicare claims in the 2 yr before hospital discharge to determine the following comorbid conditions: CKD, diabetes, hypertension, and heart disease. The algorithm we used required at least one inpatient or skilled nursing facility claim or at least two outpatient or physician/supplier claims with the corresponding comorbid condition as a diagnosis code. Diagnosis codes and algorithms for these conditions have previously been validated.^{27,30,31} Because Hispanic, American Indian, and Asian American patients made up a small proportion of participants, they were classified as other racial group. White and black patients in this study were non-Hispanic.

Statistical Analysis

All data were analyzed using SAS (SAS Institute, Cary, NC). The Kaplan-Meier method was used to obtain probability curves of devel-

oping ESRD. Cox proportional hazard models were used to estimate HR for developing ESRD and death. Explanatory variables in the Cox model were age, gender, race, AKI, and the baseline conditions including CKD, diabetes, hypertension, and heart disease. For all survival models, follow-up time began at hospital discharge. Death was censored in the Cox model for developing ESRD, and ESRD was censored in the Cox model for death.

ACKNOWLEDGMENTS

The data reported here were supplied by the USRDS. This study was performed under contract HHSN267200715002C (National Institute of Diabetes and Digestive and Kidney Diseases, National Institutes of Health, Bethesda, MD).

We thank USRDS colleagues Beth Forrest and Shane Nygaard for manuscript preparation and Nan Booth, MSW, MPH, for manuscript editing.

DISCLOSURES

None.

REFERENCES

1. Abreo K, Moorthy AV, Osborne M: Changing patterns and outcome of acute renal failure requiring hemodialysis. *Arch Intern Med* 146: 1338–1341, 1986
2. Chertow GM, Christiansen CL, Cleary PD, Munro C, Lazarus JM: Prognostic stratification in critically ill patients with acute renal failure requiring dialysis. *Arch Intern Med* 155: 1505–1511, 1995
3. Douma CE, Redekop WK, van der Meulen JH, van Olden RW, Haeck J, Struijk DG, Krediet RT: Predicting mortality in intensive care patients with acute renal failure treated with dialysis. *J Am Soc Nephrol* 8: 111–117, 1997
4. Parker RA, Himmelfarb J, Tolckoff-Rubin N, Chandran P, Wingard RL, Hakim RM: Prognosis of patients with acute renal failure requiring dialysis: Results of a multicenter study. *Am J Kidney Dis* 32: 432–443, 1998
5. Star RA: Treatment of acute renal failure. *Kidney Int* 54: 1817–1831, 1998
6. Briggs JD, Kennedy AC, Young LN, Luke RG, Gray M: Renal function after acute tubular necrosis. *BMJ* 3: 513–516, 1967
7. Finkenstaedt JT, Merrill JP: Renal function after recovery from acute renal failure. *N Engl J Med* 254: 1023–1026, 1956
8. Lowe KG: The late prognosis in acute tubular necrosis: An interim follow-up report on 14 patients. *Lancet* 1: 1086–1088, 1952
9. Schiff H: Renal recovery from acute tubular necrosis requiring renal replacement therapy: A prospective study in critically ill patients. *Nephrol Dial Transplant* 21: 1248–1252, 2006
10. Morgera S, Kraft AK, Siebert G, Luft FC, Neumayer HH: Long-term outcomes in acute renal failure patients treated with continuous renal replacement therapies. *Am J Kidney Dis* 40: 275–279, 2002
11. Bonomini V, Stefoni S, Vangelista A: Long-term patient and renal prognosis in acute renal failure. *Nephron* 36: 169–172, 1984
12. Spurney RF, Fulkerson WJ, Schwab SJ: Acute renal failure in critically ill patients: Prognosis for recovery of kidney function after prolonged dialysis support. *Crit Care Med* 19: 8–11, 1991
13. Metcalfe W, Simpson M, Khan IH, Prescott GJ, Simpson K, Smith WC,

- Macleod AM: Acute renal failure requiring renal replacement therapy: Incidence and outcome. *QJM* 95: 579–583, 2002
14. Bhandari S, Turney JH: Survivors of acute renal failure who do not recover renal function. *QJM* 89: 415–421, 1996
 15. Korkeila M, Ruokonen E, Takala J: Costs of care, long-term prognosis and quality of life in patients requiring renal replacement therapy during intensive care. *Intensive Care Med* 26: 1824–1831, 2000
 16. Newsome BB, Warnock DG, McClellan WM, Herzog CA, Kiefe CI, Eggers PW, Allison JJ: Long-term risk of mortality and end-stage renal disease among the elderly after small increases in serum creatinine level during hospitalization for acute myocardial infarction. *Arch Intern Med* 168: 609–616, 2008
 17. Parikh CR, Coca SG, Wang Y, Masoudi FA, Krumholz HM: Long-term prognosis of acute kidney injury after acute myocardial infarction. *Arch Intern Med* 168: 987–995, 2008
 18. Lins RL, Elseviers MM, Daelemans R: Severity scoring and mortality 1 year after acute renal failure. *Nephrol Dial Transplant* 21: 1066–1068, 2006
 19. Bagshaw SM, Laupland KB, Doig CJ, Mortis G, Fick GH, Mucenski M, Godinez-Luna T, Svenson LW, Rosenthal T: Prognosis for long-term survival and renal recovery in critically ill patients with severe acute renal failure: A population-based study. *Crit Care* 9: R700–R709, 2005
 20. Hou SH, Bushinsky DA, Wish JB, Cohen JJ, Harrington JT: Hospital-acquired renal insufficiency: A prospective study. *Am J Med* 74: 243–248, 1983
 21. Nash K, Hafeez A, Hou S: Hospital-acquired renal insufficiency. *Am J Kidney Dis* 39: 930–936, 2002
 22. Robertson S, Newbigging K, Isles CG, Brammah A, Allan A, Norrie J: High incidence of renal failure requiring short-term dialysis: A prospective observational study. *QJM* 95: 585–590, 2002
 23. Hallan SI, Coresh J, Astor BC, Asberg A, Powe NR, Romundstad S, Hallan HA, Lydersen S, Holmen J: International comparison of the relationship of chronic kidney disease prevalence and ESRD risk. *J Am Soc Nephrol* 17: 2275–2284, 2006
 24. Hsu CY, Vittinghoff E, Lin F, Shlipak MG: The incidence of end-stage renal disease is increasing faster than the prevalence of chronic renal insufficiency. *Ann Intern Med* 141: 95–101, 2004
 25. Hsu CY, Go AS, McCulloch CE, Darbinian J, Iribarren C: Exploring secular trends in the likelihood of receiving treatment for end-stage renal disease. *Clin J Am Soc Nephrol* 2: 81–88, 2007
 26. Waikar SS, Wald R, Chertow GM, Curhan GC, Winkelmayer WC, Liangos O, Sosa MA, Jaber BL: Validity of *International Classification of Diseases, Ninth Revision, Clinical Modification* codes for acute renal failure. *J Am Soc Nephrol* 17: 1688–1694, 2006
 27. Winkelmayer WC, Schneeweiss S, Mogun H, Patrick AR, Avorn J, Solomon DH: Identification of individuals with CKD from Medicare claims data: A validation study. *Am J Kidney Dis* 46: 225–232, 2005
 28. Hsu CY, Ordonez JD, Chertow GM, Fan D, McCulloch CE, Go AS: The risk of acute renal failure in patients with chronic kidney disease. *Kidney Int* 74: 101–107, 2008
 29. US Renal Data System: *USRDS 2006 Annual Data Report*, Bethesda, National Institutes of Health, National Institute of Diabetes and Digestive and Kidney Diseases, 2006
 30. Hebert PL, Geiss LS, Tierney EF, Engelgau MM, Yawn BP, McBean AM: Identifying persons with diabetes using Medicare claims data. *Am J Med Qual* 14: 270–277, 1999
 31. Quan H, Parsons GA, Ghali WA: Validity of information on comorbidity derived from ICD-9-CM administrative data. *Med Care* 40: 675–685, 2002

See related editorial, “●●●,” on pages 000–000.