

ASN KIDNEYWEEK²⁰¹⁹

Washington, DC • Nov. 5 – 10

Preliminary Program



Walter E. Washington Convention Center
www.asn-online.org/KidneyWeek

Join more than 12,000 kidney professionals from across the globe at Kidney Week 2019 in Washington, DC. As the world's largest and most dynamic meeting of kidney professionals, participants share their work, learn about the latest advances in the field, develop new collaborations, and listen to provocative exchanges between leading experts. Join your colleagues, and be a part of this tremendous progress in the practice of nephrology.



Who Should Attend?

- ✓ Physicians
- ✓ Researchers
- ✓ Nurses and Nurse Practitioners
- ✓ Pharmacists
- ✓ Physician Assistants
- ✓ Medical and Other Trainees—including medical students, residents, graduate students, post-docs, and fellows
- ✓ Other Healthcare Professionals

For more than five decades, ASN Kidney Week is a major forum for the dissemination of advances in basic, clinical, and translational research as well as clinical practice and patient care.

Some of the most dynamic and exciting work in our field centers around the vast potential of recent breakthroughs in basic science, clinical trials, and epidemiology, which will be highlighted at this year's meeting. Be a part of this exclusive opportunity to connect with peers and thought leaders from inside and outside the specialty.



Pathways/Concurrents

Learning pathways help you easily navigate the meeting based on your interests. Over 150 concurrent sessions provide a complete education for attendees. You'll be able to choose from a broad range of topics, so you can customize the learning you need.

- Acute Kidney Injury
- Bone and Mineral Metabolism
- Cell and Transport Physiology
- Chronic Kidney Disease
- Development and Pediatrics
- Diabetes and Metabolism
- Dialysis
- Genetic Diseases of the Kidneys
- Geriatric Nephrology
- Glomerular Diseases
- Hypertension and CVD
- Pathology
- Transplantation and Immunology

CME Credits—Annual Meeting

The American Society of Nephrology (ASN) is accredited by the Accreditation Council for Continuing Medical Education (ACCME) to provide continuing medical education for physicians.

This activity has been approved for *AMA PRA Category 1 Credit™*.

The American Academy of Physician Assistants accepts certificates of participation for educational activities certified for *AMA PRA Category 1 Credit™* from organizations accredited by ACCME or a recognized state medical society.

CNE and CPE Credits—Annual Meeting



JOINTLY ACCREDITED PROVIDER™
INTERPROFESSIONAL CONTINUING EDUCATION

In support of improving patient care, this activity has been planned and implemented by the University of Minnesota, Interprofessional Continuing Education and the American Society of Nephrology. University of Minnesota, Interprofessional Continuing Education is jointly accredited by the Accreditation Council for

Continuing Medical Education (ACCME), the Accreditation Council for Pharmacy Education (ACPE), and the American Nurses Credentialing Center (ANCC), to provide continuing education for the healthcare team.

Plenary Sessions

Learn from these state-of-the-art lectures, and hear from pioneers who inspire and challenge us each day.



Jennifer A. Doudna, PhD



Michael W. Young, PhD



Danielle Ofri, MD, PhD



Dean L. Kamen



Bruce Culleton, MD

Thursday, November 7

Jennifer A. Doudna, PhD, University of California, Berkeley
Rewriting the Code of Life: The Future of Genome Editing

Friday, November 8

Michael W. Young, PhD, The Rockefeller University
Genes Controlling Sleep and Circadian Rhythms

Saturday, November 9

Dean L. Kamen, DEKA Research & Development Corporation
Bruce Culleton, MD, CVS Health
Perspectives on Innovation and Transformation in Kidney Care

Sunday, November 10

Danielle Ofri, MD, PhD, New York University; Author
What Patients Say; What Doctors Hear

Endowed/Special Lectureships

Christopher R. Blagg Lectureship in Renal Disease and Public Policy –
Adam Boehler (invited), *The Future of Value-Based Care and Nephrology*

Barry M. Brenner Endowed Lectureship – **Michael Mauer, MD**, *Diabetic Kidney Disease: Structural-Functional Relationships and the Possibilities of Cure*

Jack W. Coburn Endowed Lectureship – **Sharon M. Moe, MD, FASN**, *FGF23 and Risks of Cardiovascular and Noncardiovascular Diseases*

Celeste Castillo Lee Memorial Lectureship – **Derek Leonard Forfang**, *Person-Centered Dialysis Care: A Patient's Perspective*

NEW! Burton D. Rose Endowed Lectureship – **Bertram L. Kasiske, MD**, *Educating Patients and Practitioners About the Benefits of Transplantation*

Robert W. Schrier Endowed Lectureship – **Ali G. Gharavi, MD**, *Diagnostic Exome Sequencing in CKD*

Michelle P. Winn Endowed Lectureship – **Rasheed A. Gbadegesin, MD, MBBS, FASN**, *Genome-Wide Association Study (GWAS)-Derived Targets for Glomerular Diseases*

Other Activities

Abstracts and Posters

View thousands of abstracts and posters on numerous topics representing a variety of perspectives on kidney diseases, including basic, clinical, and translational science as well as epidemiology and public health research.

High-Impact Clinical Trials Session

This high-profile session features clinical trials in nephrology that will inform future patient care. Please note new date and time of Friday, November 8, 2:00–4:00 p.m.

Scientific Exposition

A vital part of the Kidney Week educational experience is found on the scientific exposition floor. This unparalleled venue provides demonstrations of products and services that will enhance your understanding of the latest advancements in pharmaceuticals, devices, imaging, and services important to maintaining a state-of-the-art lab and providing high-quality patient care.

Welcome Reception

Attend the Welcome Reception in the exhibit hall at 6:30 p.m. on Thursday, November 7, for all Kidney Week participants. This celebratory event will provide participants with an additional time to meet other attendees, engage with exhibitors, and explore the exhibit hall.

FIT Bowl

Visit the Exhibit Hall to watch the 2019 Fellows in Training (FIT) Bowl. Every year since 2012, ASN has hosted this event at Kidney Week to inspire fellows to compete and learn nephrology in a fun and competitive way. This year's competition is a two-day, single elimination tournament.

Communities Lounge

Enhance your Kidney Week experience by visiting the Communities Lounge. Connect with those working in your area of study or working in areas you want to know more about. The lounge is located in the exhibit hall and features:

- ASN Community Leaders
- Central Connectivity Bar
- Meeting Quads
- Relaxation Zone
- Winners Circle – Hear from past winners of the ASN Innovations in Kidney Education Contest

Career Fair

The ASN Career Fair offers an excellent opportunity to meet face-to-face with representatives of top employers in the nephrology field—all in one place.

Exhibitor Spotlights

Two theaters in the exhibit hall spotlight industry's latest advances in nephrology practices, products, services, and technologies during 60-minute presentations (no continuing education credits). Seating is first-come, first-served and limited to 75 participants.

Kidney Week On-Demand

This online program contains approximately 200 hours of Annual Meeting presentations and is included with your registration at no additional cost. View presenters' slides while listening to fully-synchronized audio from your computer, tablet, or smartphone. CME/CNE/CPE credits will not be awarded for these materials.





Sampling of Kidney Week Concurrents

Cytoprotection: New Guardians of the Kidneys Coming to the Fore

AKI results from the interplay of cytotoxic and cytoprotective mechanisms. Learn about newly recognized cytoprotectants against AKI and underscores the role of sex and age as determinants of resistance and sensitivity to AKI.

Update on Acute Dialytic Modalities in Nephrology: What Are the Data?

Learn the latest on high cut-off dialysis for cast nephropathy, extracorporeal therapies for sepsis without AKI, CRRT for rhabdomyolysis and tumor lysis syndrome, peritoneal dialysis for AKI and urgent start ESRD, and more.

Kidney, Bone, and Vasculature: Is the Gut a New Piece of the Puzzle?

Patients with CKD exhibit a disproportionate burden of cardiovascular mortality. Examine mounting evidence suggesting that alterations to the intestinal microbiome in CKD may serve as a unique, nontraditional risk factor.

Kidney Stone Disease: Take Care of That Rock

Explore controversies regarding the risk for kidney stone disease among obese patients and after bariatric surgery, as well as the effect of dietary interventions.

Genes, Epigenetics, and Tubule Transport

Learn about recent discoveries in the genomic and epigenetic regulation of renal tubule function and their importance for normal renal physiology and kidney diseases.

Novel Therapeutics in CKD: What Is on the Horizon?

Learn novel approaches to drug discovery, new uses for currently available therapy, and emerging therapeutics coming down the pipeline.

APOL1: The Dawning of the Era of Treatment

Discover the expanding spectrum of APOL1-associated disease, mechanisms whereby APOL1 kidney-risk variants may produce cellular dysfunction, the application of genomics and precision medicine in ESRD, and more.



To Grow a Kidney

Examine new work in understanding pathways in patterning and formation of key kidney structures and explores the consequences of their dysregulation in the pediatric kidney.

Management of CKD in Children

Explore specific challenges related to anemia and metabolic bone disease in children with CKD. Additional discussion includes potential future trials to best address the needs of this patient population.

Functional Proteomics: Unraveling Molecular Machines to Protein Networks in Metabolic Disease

Mass spectrometry-based approaches allow characterization of cellular protein assemblies and subsequent assignment of individual proteins to specific molecular machines, pathways, and networks. Learn how to apply these techniques.

Major Clinical Trials for Diabetic Kidney Disease: CREDENCE and SONAR

Hear about the key elements of the landmark trials, which are expected to set a new course in motion for diabetic kidney disease.

Innovations of Dialysis Delivery

Discover the latest technology in finding more affordable dialysis, innovations to enhance the mobility of dialysis patients using wearable kidneys, and possible ways to improve the dialysis vascular access.

Individualizing Dialysis in a World of Protocolized Care

A one-size-fits-all approach to dialysis therapy is not optimal. Explore how dialysis care can be individualized and incorporates the perspective of a former hemodialysis patient.

Is Dialysis Safe? A Critical Look at Hemodialysis and Peritoneal Dialysis in the United States

Take a critical look at new knowledge in the safety of hemodialysis and peritoneal dialysis, including human factors, outbreaks, real-life safety challenges that patients have faced in the dialysis unit, and more.

Progress and Controversies in PKD

Examine recent discoveries and controversies in PKD, including the roles of primary cilia, hippo signaling, and planar cell polarity. Recent clinical trials using somatostatin analogues to alter cAMP and cyst growth are reviewed.

Hope on the Horizon: Novel Therapeutics for Glomerular Disease

Validated therapeutic targets for glomerular disease are lacking with no clinically available therapies approved by the US Food and Drug Administration. This session covers recent promising discoveries that augur well for novel treatment options.

Clinical Trials in Glomerular Disease: Famine to Feast?

This session summarizes the major pathway targets of emerging therapies in glomerular diseases, critically reviews recent trials and their implications for clinical practice, and presents major ongoing trials of therapies under investigation.



Hot off the Press: What's New in Hypertension?

Examine new evaluations of the SPRINT data; publications on the effects of the lower BP target on dementia and cognitive functioning; SPRINT ASK with rates of all-cause dementia, mild cognitive impairment, and kidney function; KDIGO guidelines; and more.

Sex and Hypertension

More women have hypertension with aging than men, and more women die from CVD than men. Learn new insights into why postmenopausal women may have increased incidence of hypertension.

Best of ASN Journals: CJASN and JASN

The session features high-impact publications in CJASN and JASN from 2019, including two or three notable papers presented by authors and timed for online publication and press release.

Putting the Patient in Patient-Oriented Clinical Trials

Focus on patient-centered issues that are critical to clinical trials in nephrology and how to establish and implement patient-centered outcomes into the clinical trial arena.

Dysproteinemic Renal Disease

This session covers clinical, pathologic, and pathophysiologic aspects of dysproteinemic renal disease, as well as the expanding spectrum of monoclonal gammopathy of renal significance.

More than Meets the Eye: Kidney Imaging Meets Big Data

Technological advancements in imaging molecular and cellular targets are developing at a rapid pace. Discover imaging advances that allow the extraction of multidimensional data, its analysis, and its application to kidney biology.

Update on Clinical Trials in Transplantation Tolerance

Explore several ongoing trials designed to induce tolerance in transplant recipients.

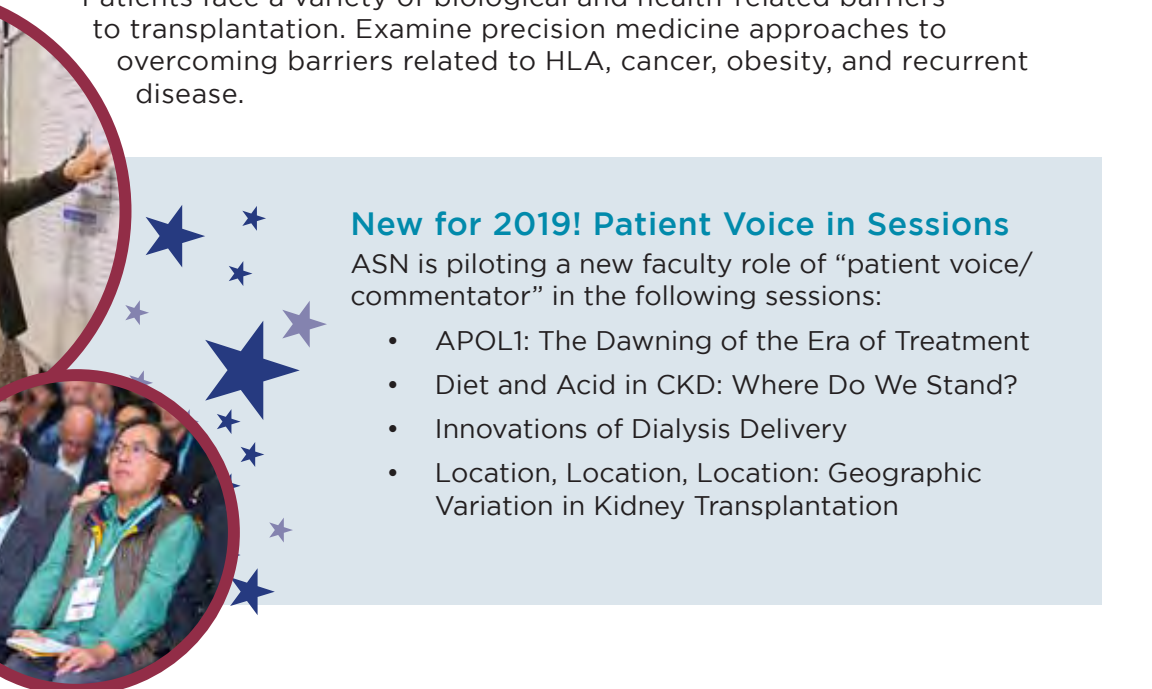
Let's Get You That Kidney Transplant

Patients face a variety of biological and health-related barriers to transplantation. Examine precision medicine approaches to overcoming barriers related to HLA, cancer, obesity, and recurrent disease.

New for 2019! Patient Voice in Sessions

ASN is piloting a new faculty role of "patient voice/commentator" in the following sessions:

- APOL1: The Dawning of the Era of Treatment
- Diet and Acid in CKD: Where Do We Stand?
- Innovations of Dialysis Delivery
- Location, Location, Location: Geographic Variation in Kidney Transplantation





Annual Meeting Registration Information

	ASN Member [†]	Non-member	ASN Fellow-in-Training Member (PhD/Post Doctorate Trainee) [†]	ASN Student Member (Undergraduate, Graduate, Medical, PhD, Resident)
Early				
June 12 – September 5	\$495	\$865	\$250	\$0
Advance				
September 6 – October 30	\$570	\$965	\$300	\$0
Onsite				
October 31 – November 9	\$670	\$1165	\$375	N/A

[†] ASN Member ID required. Your Member ID can be found on the label of your Kidney Week Preliminary Program, *JASN*, or by contacting ASN at email@asn-online.org.

Not a member?

Membership in ASN is \$395. The difference between member and nonmember rates is \$370 for the early rate. By joining ASN, you will pay \$25 more to receive all member benefits, including complimentary access to journals, *Kidney News*, online communities, and self-assessment programs. (After September 5, it is cheaper to become an ASN member than attend as a nonmember.)

To become a member of ASN, visit www.asn-online.org/membership

Registration Questions?

Please contact ASN Registration at asnregistration@spargoinc.com, (866) 849-8868, inside the United States, (571) 549-4543, International, or via fax at (703) 631-2971.

Cancellation Policy

Refunds, less a \$125 fee, will be granted for requests received in writing prior to Thursday, September 5, 2019, 11:59 p.m. EDT. Email requests to asnregistration@spargoinc.com, or fax written requests to (703) 631-2971. Refunds will be processed after the meeting. After September 5, 2019, all sales are final.

Cancellation requests must be submitted in writing and sent to asnregistration@spargoinc.com. Cancellations will not be accepted by phone or onsite. Cancellations will be acknowledged by email. If you do not receive an acknowledgement within two weeks, please contact Customer Service at +1 (866) 849-8868 or International +1 (571) 549-4543 or by email at asnregistration@spargoinc.com. \$125 cancellation fee will be assessed on cancellations received by September 5, 2019. After September 5, 2019, 100% cancellation fee will be assessed on ALL CANCELLATIONS. Refunds will NOT be given for no shows.



Registration Badge

Your registration must be received by Thursday, September 5, 2019 in order for your badge to be mailed in advance of Kidney Week. For registrations received after September 5, 2019, participants will pick up their badges at the registration counter onsite at the Walter E. Washington Convention Center, West Salons in Washington, DC.

Early Programs

ASN Early Programs take place November 5-6, two days prior to the Annual Meeting. These programs offer you the best opportunity to make the most of your time in Washington, DC especially if you're traveling a long distance.

Two Days (November 5-6)

- **Acid-Base, Fluid, and Electrolyte Balance Disorders: Challenging Issues for Clinicians** - *Kianoush Kashani, MD, MS, FASN, Biff F. Palmer, MD, FASN*
- **Advances in Research Conference: Machine Learning and Kidney Diseases** - *Matthias Kretzler, MD, Olga Troyanskaya, PhD, Francis Perry Wilson, MD*
- **Critical Care Nephrology: 2019 Update** - *Michael Heung, MD, MS, FASN, Ashita J. Tolwani, MD, MS*
- **Diabetic Kidney Disease: Translating Pathogenic Mechanisms into Therapies** - *Ariela Benigni, PhD, Katherine R. Tuttle, MD, FASN*
- **Fundamentals of Renal Pathology** - *Anthony Chang, MD, FASN, Lynn D. Cornell, MD, Mark Haas, MD, PhD*
- **Glomerular Diseases Update 2019** - *Keisha L. Gibson, MD, MPH, FASN, J. Ashley Jefferson, MD, FASN*
- **Kidney Transplantation** - *Michelle A. Josephson, MD, FASN, Fuad S. Shihab, MD, FASN*
- **Maintenance Dialysis** - *Peter G. Blake, MBChB, Jennifer E. Flythe, MD, MPH, FASN*

One Day (November 6)

- **Evolving Concepts in Hypertension: Mechanisms, Management, and Future Directions** - *Chirag R. Parikh, MD, PhD, FASN, Mahboob Rahman, MBBS, MD*
- **Onco-Nephrology: Cancer, Chemotherapy, and the Kidneys** - *Edgar A. Jaimes, MD, Kenar D. Jhaveri, MD, FASN*

Early Program Registration Information

Two Days (Tuesday, November 5 – Wednesday, November 6)

	ASN Member	Non-member	ASN Fellow-in-Training Member <i>(PhD/Post Doctorate Trainee)[†]</i> ASN Student Member <i>(Undergraduate, Graduate, Medical, PhD, Resident)</i>
Early			
June 12 – September 5	\$535	\$810	\$275
Advance			
September 6 – October 30	\$610	\$910	\$350
Onsite			
October 31 – November 9	\$710	\$1110	\$450

One Day (Wednesday, November 6)

	ASN Member	Non-member	ASN Fellow-in-Training Member <i>(PhD/Post Doctorate Trainee)[†]</i> ASN Student Member <i>(Undergraduate, Graduate, Medical, PhD, Resident)</i>
June 12 – September 5	\$280	\$485	\$185
September 6 – October 30	\$355	\$585	\$210
October 31 – November 9	\$455	\$685	\$310

Fundamentals of Renal Pathology

(Tuesday, November 5 – Wednesday, November 6)

	ASN Member	Non-member	ASN Fellow-in-Training Member <i>(PhD/Post Doctorate Trainee)[†]</i> ASN Student Member <i>(Undergraduate, Graduate, Medical, PhD, Resident)</i>
June 12 – September 5	\$685	\$865	\$410
September 6 – October 30	\$760	\$965	\$485
October 31 – November 9	\$860	\$1,165	\$585