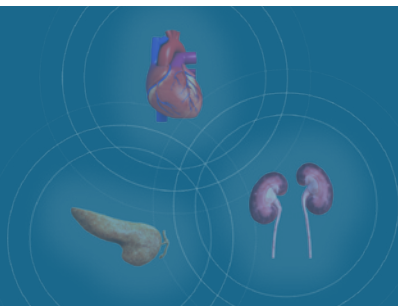


# Understanding the Interconnectivity of the CV, Renal, and Metabolic Systems



**PLEASE VISIT  
THE EXHIBITOR  
SPOTLIGHTS STARTING  
WEDNESDAY, OCTOBER 22  
TO ACCESS  
THIS PROGRAM.**

This program will provide an overview of the interconnectivity of the cardiovascular, renal, and metabolic systems, the clinical implications of this interrelationship, and a multidisciplinary approach to care.



**Dan Bensimhon, MD**

Medical Director,  
Advanced HF & Mechanical  
Circulatory Support Program  
Cone Health  
Greensboro, North Carolina



**Leigh Perreault, MD**

Associate Professor of Medicine,  
Division of Endocrinology,  
Metabolism and Diabetes  
Affiliate, Center for Global Health  
University of Colorado Anschutz  
Medical Campus  
Associate Professor of Epidemiology,  
Colorado School of Public Health  
Aurora, Colorado



**Eugene E. Wright Jr, MD**

Medical Director,  
Performance Improvement  
Charlotte Area Health Education  
Center (AHEC)  
Charlotte, North Carolina

*The Exhibitor Spotlight is not a Continuing Education (CE) activity.*

This presentation is supported by and made on behalf of Boehringer Ingelheim Pharmaceuticals, Inc. and Lilly USA, LLC. Presentation content has been reviewed for consistency with FDA guidelines and is not approved for continuing medical education credit. Speakers receive fair market value compensation for this presentation.

Pursuant to the PhRMA (Pharmaceutical Research and Manufacturers of America) Code on Interactions with Healthcare Professionals, attendance by healthcare professionals' spouses or guests is not permitted.