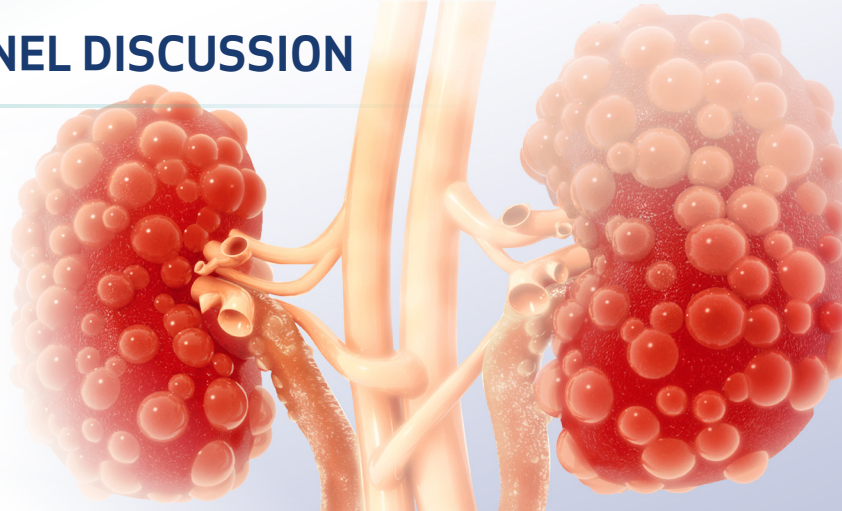


# JOIN US FOR A LIVE EXPERT PANEL DISCUSSION

## Early Identification and Management in Autosomal Dominant Polycystic Kidney Disease (ADPKD) Featuring Dialogue With a Patient Ambassador



Please join us at an Exhibitor Spotlight during American Society of Nephrology (ASN) Kidney Week 2023 to learn more about this important topic for your patients.

### Program Objectives:

- Discuss the disease course of ADPKD
- Learn about how total kidney volume (TKV) relates to risk of ADPKD progression
- Review the clinical data
- Understand the patient perspective and available resources to support your patients with ADPKD

### WHEN

Friday, November 3, 2023

1:00–1:45 PM

Exhibitor Spotlight during the ASN Kidney Week 2023 Annual Meeting

### WHERE

Pennsylvania Convention Center

Exhibit Hall B (Enter at Exhibit Hall C)

Theater 2

Philadelphia, Pennsylvania

### PRESENTERS\*



**Luis E. Vélez, MD**

Nephrologist, South Texas Renal Care Center  
Medical Director, US Renal Care Southeast  
San Antonio, Texas



**Cari**

Patient Ambassador for JYNARQUE

\*The presenters are paid consultants of Otsuka America Pharmaceutical, Inc.

The intended audience for this program is US-based healthcare professionals involved in the management of patients with ADPKD.

This program is sponsored by Otsuka America Pharmaceutical, Inc. This invitation is nontransferable.

In accordance with the PhRMA Code on Interactions with Healthcare Professionals, attendance at this program is limited to only Healthcare Professionals (Physicians, Nurse Practitioners, Physician Assistants, RNs, Clinical Pharmacists, Social Workers). Accordingly, attendance by guests or spouses is not permitted.

The Exhibitor Spotlight is not a Continuing Education (CE) activity.

This program may include the provision of a modest meal. Otsuka does not offer such a meal to healthcare professionals (HCPs) whose institutions prohibit such hospitality, nor does Otsuka offer a meal where federal or state laws (e.g., Vermont and Minnesota) limit an HCP's ability to accept such a meal. Accordingly, please consult your legal or ethics advisor regarding any applicable limitation before attending this program. If you are licensed to practice in a state where meals are either prohibited and/or restricted and you accept a meal, you understand that you will be required to reimburse Otsuka for the cost of the meal.

Please note that Otsuka is required to report the value of a provided meal pursuant to applicable federal and/or state laws.

## INDICATION and IMPORTANT SAFETY INFORMATION for JYNARQUE® (tolvaptan)

### INDICATION:

JYNARQUE is indicated to slow kidney function decline in adults at risk of rapidly progressing autosomal dominant polycystic kidney disease (ADPKD).

### IMPORTANT SAFETY INFORMATION:

#### WARNING: RISK OF SERIOUS LIVER INJURY

- JYNARQUE (tolvaptan) can cause serious and potentially fatal liver injury. Acute liver failure requiring liver transplantation has been reported
- Measure transaminases (ALT, AST) and bilirubin before initiating treatment, at 2 weeks and 4 weeks after initiation, then monthly for the first 18 months and every 3 months thereafter. Prompt action in response to laboratory abnormalities, signs, or symptoms indicative of hepatic injury can mitigate, but not eliminate, the risk of serious hepatotoxicity
- Because of the risks of serious liver injury, JYNARQUE is available only through a Risk Evaluation and Mitigation Strategy program called the JYNARQUE REMS Program

Please see accompanying [FULL PRESCRIBING INFORMATION](#), including **BOXED WARNING**.

(continued on next page)

## IMPORTANT SAFETY INFORMATION for JYNARQUE® (tolvaptan) (cont'd)

### CONTRAINDICATIONS:

- History, signs or symptoms of significant liver impairment or injury. This contraindication does not apply to uncomplicated polycystic liver disease
- Taking strong CYP3A inhibitors
- With uncorrected abnormal blood sodium concentrations
- Unable to sense or respond to thirst
- Hypovolemia
- Hypersensitivity (e.g., anaphylaxis, rash) to JYNARQUE or any component of the product
- Uncorrected urinary outflow obstruction
- Anuria

**Serious Liver Injury:** JYNARQUE can cause serious and potentially fatal liver injury. Acute liver failure requiring liver transplantation has been reported in the post-marketing ADPKD experience. Discontinuation in response to laboratory abnormalities or signs or symptoms of liver injury (such as fatigue, anorexia, nausea, right upper abdominal discomfort, vomiting, fever, rash, pruritus, icterus, dark urine or jaundice) can reduce the risk of severe hepatotoxicity. To reduce the risk of significant or irreversible liver injury, assess ALT, AST and bilirubin prior to initiating JYNARQUE, at 2 weeks and 4 weeks after initiation, then monthly for 18 months and every 3 months thereafter.

**Hypertremia, Dehydration and Hypovolemia:** JYNARQUE therapy increases free water clearance which can lead to dehydration, hypovolemia and hypertremia. Instruct patients to drink water when thirsty, and throughout the day and night if awake. Monitor for weight loss, tachycardia and hypotension because they may signal dehydration. Ensure abnormalities in sodium concentrations are corrected before initiating therapy. If serum sodium increases above normal or the patient becomes hypovolemic or dehydrated and fluid intake cannot be increased, suspend JYNARQUE until serum sodium, hydration status and volume status parameters are within the normal range.

**Inhibitors of CYP3A:** Concomitant use of JYNARQUE with drugs that are moderate or strong CYP3A inhibitors (e.g., ketoconazole, itraconazole, lopinavir/ritonavir, indinavir/ritonavir, ritonavir, and conivaptan) increases tolvaptan exposure. Use with strong CYP3A inhibitors is contraindicated; dose reduction of JYNARQUE is recommended for patients taking moderate CYP3A inhibitors. Patients should avoid grapefruit juice beverages while taking JYNARQUE.

**Adverse Reactions:** Most common observed adverse reactions with JYNARQUE (incidence >10% and at least twice that for placebo) were thirst, polyuria, nocturia, pollakiuria and polydipsia.

### Other Drug Interactions:

- **Strong CYP3A Inducers:** Co-administration with strong CYP3A inducers reduces exposure to JYNARQUE. Avoid concomitant use of JYNARQUE with strong CYP3A inducers
- **V<sub>2</sub>-Receptor Agonist:** Tolvaptan interferes with the V<sub>2</sub>-agonist activity of desmopressin (dDAVP). Avoid concomitant use of JYNARQUE with a V<sub>2</sub>-agonist

**Pregnancy and Lactation:** Based on animal data, JYNARQUE may cause fetal harm. In general, JYNARQUE should be discontinued during pregnancy. Advise women not to breastfeed during treatment with JYNARQUE.

To report SUSPECTED ADVERSE REACTIONS, contact Otsuka America Pharmaceutical, Inc. at 1-800-438-9927 or FDA at 1-800-FDA-1088 ([www.fda.gov/medwatch](http://www.fda.gov/medwatch)).

Please see accompanying [FULL PRESCRIBING INFORMATION](#), including **BOXED WARNING**.

[Privacy Policy](#) | [Use of Terms](#)



Manufactured by Otsuka Pharmaceutical Co., Ltd., Tokyo, 101-8535 Japan.  
Distributed and marketed by Otsuka America Pharmaceutical, Inc., Rockville, MD 20850.  
JYNARQUE is a registered trademark of Otsuka Pharmaceutical Co., Ltd., Tokyo, 101-8535 Japan.

©2023 Otsuka America Pharmaceutical, Inc.  
All rights reserved. September 2023 10US23EBP0175