

UNBALANCED

U.S. government invests < 1% of Medicare kidney care costs in kidney research

- ✓ NIH investments equal **<1% of the cost of care¹**
- ✓ **\$33.9 billion**
Medicare kidney failure patient costs¹
- ✓ **\$564 million**
NIH investments in kidney research¹

- ✓ **\$2 billion increase for NIH**
over FY17
- ✓ **At least proportional increase for NIDDK**

Investment in Research Leads to Cures

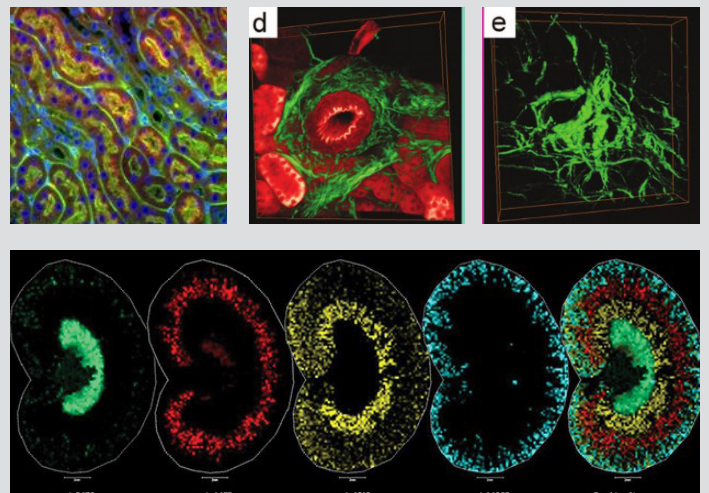
NIDDK Kidney Precision Medicine Project: Paving the Way for New Treatments

Historically, kidney diseases were described as a single, uniform disease. We now know there are many causes, requiring the development of many unique treatments.

The Kidney Precision Medicine Project is working towards that goal by:

- ✓ Creating a tissue atlas from human biopsies
- ✓ Defining unique targets for novel therapies
- ✓ Enabling precision medicine, so people with different kidney diseases get individualized treatments

Guided by patient input, KPMP will ensure the right treatment gets to the right patient at the right time.



1.] USRDS 2016.

2.] Government Accountability Office, January 18, 2017. "Kidney Disease Research Funding and Priority Setting."

3.] National Institute of Diabetes and Digestive and Kidney Diseases 2017.